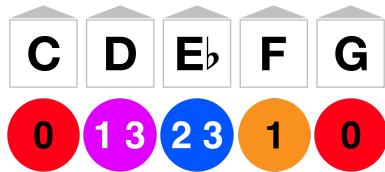


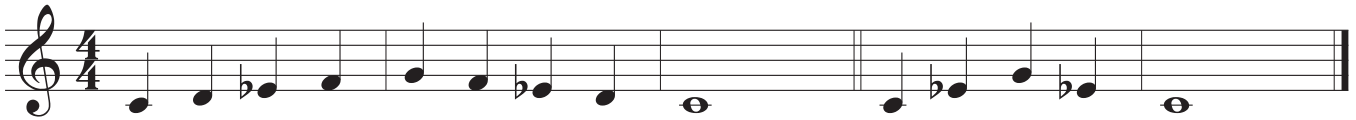
C Minor



Skill Check

- Scale
- Exercise 1
- Exercise 2
- Exercise 3
- Scale Memorized

Scale



Technique Exercises

Exercise 1



Exercise 2



Exercise 3



Etudes

Etude 1*

Etude 1* is written in 4/4 time. The first staff begins with a treble clef and a key signature of one flat (B-flat). The melody starts with a quarter rest, followed by a sequence of eighth notes: C4, D4, E4, F4, G4, A4, Bb4, C5, D5, E5, F5, G5, A5, Bb5, C6, D6, E6, F6, G6, A6, Bb6, C7, D7, E7, F7, G7, A7, Bb7, C8. The second staff continues with eighth notes: C8, D8, E8, F8, G8, A8, Bb8, C9, D9, E9, F9, G9, A9, Bb9, C10, D10, E10, F10, G10, A10, Bb10, C11, D11, E11, F11, G11, A11, Bb11, C12. The third staff concludes with eighth notes: C12, D12, E12, F12, G12, A12, Bb12, C13, D13, E13, F13, G13, A13, Bb13, C14, D14, E14, F14, G14, A14, Bb14, C15. The piece ends with a final quarter rest.

*Etude 1 can be played as a canon.

Etude 2

Etude 2 is written in 3/4 time. The first staff begins with a treble clef and a key signature of one flat (B-flat). The melody starts with a quarter rest, followed by a sequence of quarter notes: C4, D4, E4, F4, G4, A4, Bb4, C5, D5, E5, F5, G5, A5, Bb5, C6, D6, E6, F6, G6, A6, Bb6, C7, D7, E7, F7, G7, A7, Bb7, C8. The second staff continues with quarter notes: C8, D8, E8, F8, G8, A8, Bb8, C9, D9, E9, F9, G9, A9, Bb9, C10, D10, E10, F10, G10, A10, Bb10, C11, D11, E11, F11, G11, A11, Bb11, C12. The third staff concludes with quarter notes: C12, D12, E12, F12, G12, A12, Bb12, C13, D13, E13, F13, G13, A13, Bb13, C14, D14, E14, F14, G14, A14, Bb14, C15. The piece ends with a final quarter rest.